

FOLKESTONE



i Find out about Folkestone and beyond at the Visitor Information Centre. Visit the town hall or call 01303 257946.

ARTS AND CULTURE

- 1** Bandstand
- 2** Creative Quarter
- 3** Harbour Screen
- 4** Leas Cliff Hall
- 5** Quarterhouse
- 6** Silver Screen Cinema

SPORTS

- 7** Adventure golf
- 8** East Cliff Sports
- 9** F51 – skatepark, climbing & boxing
- 10** Folkestone Invicta Football Club
- 11** Radnor Park
- 12** Three Hills Sports Park
- 13** Kayaking and paddle boarding

VIEWS AND NATURE

- 14** East Cliff
- 15** Folkestone Harbour
- 16** Kingsnorth Gardens
- 17** Leas and Zig Zag Path
- 18** Lower Leas Coastal Park
- 19** Mermaid Beach
- 20** Sunny Sands
- 21** The Warren

HERITAGE

- 22** St. Mary & St. Eanswythe Church
- 23** Folkestone Museum
- 24** Former Harbour Station
- 25** Garden of Remembrance
- 26** Leas Lift
- 27** Martello Tower Number 3
- 28** Memorial Arch
- 29** War Memorial
- 30** William Harvey Statue



FOLKESTONE AND HYTHE

FOLKESTONE



Folkestone Central Station

16

Find out more about the open art trail, town trail, toilets, cycle routes and more at



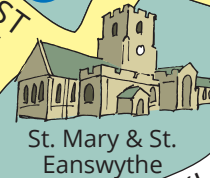
folkestoneandhythe.co.uk/your-visit



Folkestone Bus Terminal



Quarterhouse



St. Mary & St. Eanswythe



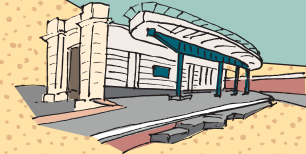
Memorial Arch



William Harvey statue



Leas Lift



Harbour Station

Zig Zag Path

COASTAL PATH

Area pedestrianised between 10am and 6pm

For more inspiration, visit: folkestoneandhythe.co.uk or follow @fhextraordinary on Instagram